



THE STATE OF GEORGIA

EXECUTIVE ORDER

BY THE GOVERNOR:

WHEREAS: The State of Georgia holds title to approximately 10.866 acres of improved real property (hereinafter the "Property") located at 3019 Memorial Drive, (known as the former Tommy M. Rouse Probation Office/Day Reporting Center), lying and being in Land Lot 209, 8th District, Ware County, Waycross, Georgia by virtue of a Quitclaim Deed dated July 29, 1994, from NationsBank of Georgia, N.A. and being recorded in Deed Book 27-R, pages 12-13 in the office of the Clerk of the Superior Court of Ware County, which Property is more particularly described on the survey attached hereto as Exhibit "A"; and

WHEREAS: Said Property is in the custody of the Georgia Department of Community Supervision ("DCS") by virtue of the enabling legislation through House Bill 310 effective July 1, 2015; and

WHEREAS: The Property is improved with buildings, hereinafter the ("Structures") currently being utilized as a DCS Field Office and storage for counselors (BLLIP Building ID #'s 5288, and 5289) shown in the aerial photograph attached hereto as Exhibit "B", and

WHEREAS: By Resolution dated March 19, 2020, the Board of Community Supervision declared the Structures had fallen into a state of disrepair and are no longer suitable for occupancy and are in need of repairs and maintenance such that razing and replacing it with a new structure is more cost effective and suitable for long term operational needs.

NOW, THEREFORE, PURSUANT TO THE AUTHORITY VESTED IN ME AS GOVERNOR OF THE STATE OF GEORGIA, IT IS HEREBY

ORDERED: The Georgia Department of Community Supervision is authorized and directed to provide for the razing, demolition and disposal of said Structures under the terms and conditions which are deemed to be in the best interests of the State of Georgia.

This 6th day of May, 2020.



GOVERNOR

ATTEST



EXECUTIVE SECRETARY

Exhibit "A"

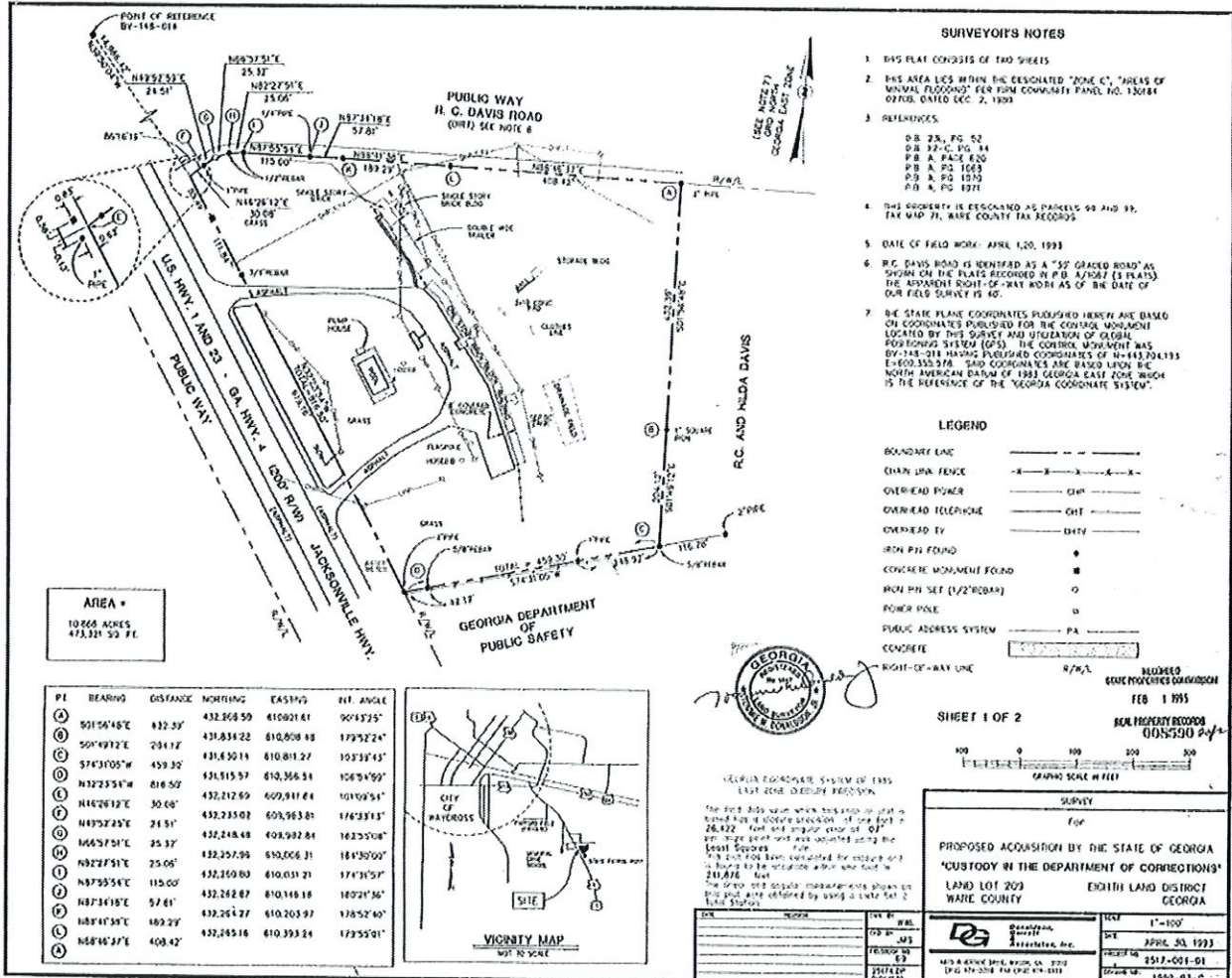


Exhibit "A"

(Continued)

CERTIFICATE OF SURVEYOR

I HEREBY CERTIFY TO ALL PARTIES INTERESTED IN THE TITLE TO THE TRACTS OF LAND UNLESS OTHERWISE STATED HEREINAFTER COLLECTIVELY REFERRED TO IN THIS CERTIFICATE AND HEREON AS THE LAND SURVEYED AND PLATTED HEREON THAT THIS PLAT (A) IS THE RESULT OF A FIELD SURVEY AND IS AN ACCURATE, CURRENT AND COMPLETE REPRESENTATION OF THE LAND SURVEYED AND PLATTED HEREON (B) WAS PREPARED IN ACCORDANCE WITH PURSUANT TO AND IS IN COMPLIANCE WITH (C) THE MODERN STANDARDS AND REQUIREMENTS OF LAW (D) THE LOCAL AND NATIONAL, IF THE SAME BE APPLICABLE AND ANY THERE IC, ORDINANCE, STATUTES AND REGULATIONS WHICH REQUIRE MODERN STANDARDS AND SPECIFICATIONS (E) COMPIES WITH THE COORDINATE METHOD OF SURVEYING FOR ALL IDENTIFIED PLATTED POINTS HEREON WITH THE COORDINATES ON THE COGNATE COORDINATE SYSTEM OF 1985 EAST ZONE, AND FOLLOWING CONVERSION AS PROVIDED IN DEGA, § 41-1-28, EXPRESSED IN AMERICAN SURVEY FEET AND DECIMALS OF A FOOT, HEREINAFTER REFERRED TO IN THIS CERTIFICATE AND HEREON AS "FEET"; DEGA, § 41-1-28 THROUGH § 41-1-30 (A) SHOWS THAT ALL BEARINGS ARE REFERENCED TO THE NAD 83 GEORGIA COORDINATE SYSTEM (B) WHICH WILL BE ACCEPTED FOR RECORD IN THE PLAT BOOK RECORDS IN THE OFFICE OF THE CLERK OF THE SUPERIOR COURT OF WARE COUNTY, GEORGIA, AS OF A SIZE THAT IS CAPABLE, WITHOUT THE USE OF INSTRUMENTS, OF BEING REPRODUCED IN THE OFFICE OF THE CLERK OF THE SUPERIOR COURT OF WARE COUNTY, GEORGIA, AND LABELS HEREON NOT TO SCALE UNLESS OTHERWISE INDICATED (C) VERIFIER BEING LOCATED AS TO THE POSITION OF SURVEYED AND PLATTED HEREON AND PLACES IT IN RELATIONSHIP TO SURROUNDING RECORDED LOTS AND BLOCKS (D) SHOWS THE PHYSICAL CHARACTER OF THE PERIMETER BOUNDARY AND PROPERTY LINES OF THE LAND SURVEYED AND PLATTED HEREON (E) OVERLIES IN RED IN HEAVY, SOLID LINES THE PERIMETER BOUNDARY AND PROPERTY LINES OF THE LAND SURVEYED AND PLATTED HEREON AND SAYS BOLD HEAVY, SOLID LINES OVERLIES IN RED IN HEAVY, SOLID LINES THE PERIMETER BOUNDARY AND PROPERTY LINES OF THE LAND SURVEYED AND PLATTED HEREON (F) POINTS TO THE LOCATION OF SURVEYED AND PLATTED HEREON (G) EXPRESS THE BEARINGS, CALCULATED FROM ANGLES TURNED AND THE LINE DISTANCES EXPRESSED IN FEET, CALCULATED BY HORIZONTAL MEASUREMENT, BETWEEN AND DIVIDED AS TO EACH TRACT OF LAND SURVEYED AND PLATTED HEREON (H) SHOWS THE NUMBER OF THE PLATTED POINTS AND THE BEARINGS, DISTANCES AND RECORDS OF THE INTERIOR ANGLES TURNED BY THE INTERSECTION OF THE SURVEYED AND PLATTED HEREON BEARINGS AND LINE DISTANCES (I) EXPRESS HEREON IN AN ENCASUREMENT LABELLED "INTERIOR ANGLES" THE BEARINGS OF THE PLATTED POINTS AND THE BEARINGS, DISTANCES AND RECORDS OF THE INTERIOR ANGLES TURNED BY THE INTERSECTION OF THE SURVEYED AND PLATTED HEREON BEARINGS AND LINE DISTANCES (J) EXPRESS HEREON IN AN ENCASUREMENT LABELLED "INTERIOR ANGLES" THE BEARINGS OF THE PLATTED POINTS AND THE BEARINGS, DISTANCES AND RECORDS OF THE INTERIOR ANGLES TURNED BY THE INTERSECTION OF THE SURVEYED AND PLATTED HEREON BEARINGS AND LINE DISTANCES (K) EXPRESS HEREON IN AN ENCASUREMENT LABELLED "INTERIOR ANGLES" THE BEARINGS OF THE PLATTED POINTS AND THE BEARINGS, DISTANCES AND RECORDS OF THE INTERIOR ANGLES TURNED BY THE INTERSECTION OF THE SURVEYED AND PLATTED HEREON BEARINGS AND LINE DISTANCES (L) EXPRESS HEREON IN AN ENCASUREMENT LABELLED "INTERIOR ANGLES" THE BEARINGS OF THE PLATTED POINTS AND THE BEARINGS, DISTANCES AND RECORDS OF THE INTERIOR ANGLES TURNED BY THE INTERSECTION OF THE SURVEYED AND PLATTED HEREON BEARINGS AND LINE DISTANCES (M) EXPRESS HEREON IN AN ENCASUREMENT LABELLED "INTERIOR ANGLES" THE BEARINGS OF THE PLATTED POINTS AND THE BEARINGS, DISTANCES AND RECORDS OF THE INTERIOR ANGLES TURNED BY THE INTERSECTION OF THE SURVEYED AND PLATTED HEREON BEARINGS AND LINE DISTANCES (N) EXPRESS HEREON IN AN ENCASUREMENT LABELLED "INTERIOR ANGLES" THE BEARINGS OF THE PLATTED POINTS AND THE BEARINGS, DISTANCES AND RECORDS OF THE INTERIOR ANGLES TURNED BY THE INTERSECTION OF THE SURVEYED AND PLATTED HEREON BEARINGS AND LINE DISTANCES (O) EXPRESS HEREON IN AN ENCASUREMENT LABELLED "INTERIOR ANGLES" THE BEARINGS OF THE PLATTED POINTS AND THE BEARINGS, DISTANCES AND RECORDS OF THE INTERIOR ANGLES TURNED BY THE INTERSECTION OF THE SURVEYED AND PLATTED HEREON BEARINGS AND LINE DISTANCES (P) EXPRESS HEREON IN AN ENCASUREMENT LABELLED "INTERIOR ANGLES" THE BEARINGS OF THE PLATTED POINTS AND THE BEARINGS, DISTANCES AND RECORDS OF THE INTERIOR ANGLES TURNED BY THE INTERSECTION OF THE SURVEYED AND PLATTED HEREON BEARINGS AND LINE DISTANCES (Q) EXPRESS HEREON IN AN ENCASUREMENT LABELLED "INTERIOR ANGLES" THE BEARINGS OF THE PLATTED POINTS AND THE BEARINGS, DISTANCES AND RECORDS OF THE INTERIOR ANGLES TURNED BY THE INTERSECTION OF THE SURVEYED AND PLATTED HEREON BEARINGS AND LINE DISTANCES (R) EXPRESS HEREON IN AN ENCASUREMENT LABELLED "INTERIOR ANGLES" THE BEARINGS OF THE PLATTED POINTS AND THE BEARINGS, DISTANCES AND RECORDS OF THE INTERIOR ANGLES TURNED BY THE INTERSECTION OF THE SURVEYED AND PLATTED HEREON BEARINGS AND LINE DISTANCES (S) EXPRESS HEREON IN AN ENCASUREMENT LABELLED "INTERIOR ANGLES" THE BEARINGS OF THE PLATTED POINTS AND THE BEARINGS, DISTANCES AND RECORDS OF THE INTERIOR ANGLES TURNED BY THE INTERSECTION OF THE SURVEYED AND PLATTED HEREON BEARINGS AND LINE DISTANCES (T) EXPRESS HEREON IN AN ENCASUREMENT LABELLED "INTERIOR ANGLES" THE BEARINGS OF THE PLATTED POINTS AND THE BEARINGS, DISTANCES AND RECORDS OF THE INTERIOR ANGLES TURNED BY THE INTERSECTION OF THE SURVEYED AND PLATTED HEREON BEARINGS AND LINE DISTANCES (U) EXPRESS HEREON IN AN ENCASUREMENT LABELLED "INTERIOR ANGLES" THE BEARINGS OF THE PLATTED POINTS AND THE BEARINGS, DISTANCES AND RECORDS OF THE INTERIOR ANGLES TURNED BY THE INTERSECTION OF THE SURVEYED AND PLATTED HEREON BEARINGS AND LINE DISTANCES (V) EXPRESS HEREON IN AN ENCASUREMENT LABELLED "INTERIOR ANGLES" THE BEARINGS OF THE PLATTED POINTS AND THE BEARINGS, DISTANCES AND RECORDS OF THE INTERIOR ANGLES TURNED BY THE INTERSECTION OF THE SURVEYED AND PLATTED HEREON BEARINGS AND LINE DISTANCES (W) EXPRESS HEREON IN AN ENCASUREMENT LABELLED "INTERIOR ANGLES" THE BEARINGS OF THE PLATTED POINTS AND THE BEARINGS, DISTANCES AND RECORDS OF THE INTERIOR ANGLES TURNED BY THE INTERSECTION OF THE SURVEYED AND PLATTED HEREON BEARINGS AND LINE DISTANCES (X) EXPRESS HEREON IN AN ENCASUREMENT LABELLED "INTERIOR ANGLES" THE BEARINGS OF THE PLATTED POINTS AND THE BEARINGS, DISTANCES AND RECORDS OF THE INTERIOR ANGLES TURNED BY THE INTERSECTION OF THE SURVEYED AND PLATTED HEREON BEARINGS AND LINE DISTANCES (Y) EXPRESS HEREON IN AN ENCASUREMENT LABELLED "INTERIOR ANGLES" THE BEARINGS OF THE PLATTED POINTS AND THE BEARINGS, DISTANCES AND RECORDS OF THE INTERIOR ANGLES TURNED BY THE INTERSECTION OF THE SURVEYED AND PLATTED HEREON BEARINGS AND LINE DISTANCES (Z) EXPRESS HEREON IN AN ENCASUREMENT LABELLED "INTERIOR ANGLES" THE BEARINGS OF THE PLATTED POINTS AND THE BEARINGS, DISTANCES AND RECORDS OF THE INTERIOR ANGLES TURNED BY THE INTERSECTION OF THE SURVEYED AND PLATTED HEREON BEARINGS AND LINE DISTANCES

ALL REGULAR CURVED LINES SURVEYED AND PLATTED HEREON IF ANY THERE BE, AND THE CHORD DISTANCES, CHORD BEARINGS AND DISTANCES AND RADII FOR ALL IRREGULAR CURVED LINES SURVEYED AND PLATTED HEREON IF ANY THERE BE (C) ESTABLISHED MONUMENTS AND LABELS HEREON A POINT OF REFERENCE WHICH (D) IS LOCATED AWAY FROM THE MONUMENTED POINT MARKING (E) FROM WHICH POINT IS CONNECTED BY SURVEY TO A MONUMENTED HORIZONTAL CONTROL STATION THAT IS IDENTIFIED AND HAS BEEN ESTABLISHED IN ACCORDANCE WITH THE STANDARDS OF ACCURACY AND SPECIFICATIONS AS PREPARED AND PUBLISHED BY THE FEDERAL GEODETIC CONTROL COMMISSION OF THE UNITED STATES IDENTIFIED OR RELOCATED FROM MAPS, PLATS OF SURVEY OR OTHER INSTRUMENTS OR DOCUMENTS OR PUBLIC RECORDS (E) ESTABLISHED MONUMENTS AND LABELS HEREON A POINT OF BEGINNING WHICH (F) IS EITHER LOCATED ON A PERIMETER BOUNDARY OR PROPERTY LINE OF THE LAND SURVEYED AND PLATTED HEREON OR (G) IS LOCATED AT THE INTERSECTION OF TWO PERIMETER BOUNDARIES OR PROPERTY LINES OF THE LAND SURVEYED AND PLATTED HEREON AND (H) IS TIED TO THE POINT OF REFERENCE BY A SUITABLE TRAVERSE SHOWING COURSE, DISTANCES, EXPRESSED IN FEET AND DECIMALS OF A FOOT, AND BEARINGS (I) WHICH IS ADJACENT TO THE LAND SURVEYED AND PLATTED HEREON (J) SHOWS THAT THE POINT OF BEGINNING IS THE POINT OF BEGINNING AND ALL CORNERS, POINTS AND INTERSECTIONS OF SURVEYED AND PLATTED BEARINGS, AND LINE DISTANCES HAVE BEEN ESTABLISHED AND MARKED BY EITHER IRON PINS OR OTHER PERMANENT MONUMENTS WHICH HAVE BEEN FOUND, VERIFIED, LABELED AS TO TYPE AND LEFT IN PLACE, (K) UNLESS INDICATED OTHERWISE, OR BY EXISTING MONUMENTS WHICH HAVE BEEN FOUND, VERIFIED, LABELED AS TO TYPE AND LEFT IN PLACE, (L) UNLESS INDICATED OTHERWISE, (M) UNLESS INDICATED OTHERWISE, (N) UNLESS OTHERWISE INDICATED, (O) UNLESS OTHERWISE INDICATED, (P) UNLESS OTHERWISE INDICATED, (Q) UNLESS OTHERWISE INDICATED, (R) UNLESS OTHERWISE INDICATED, (S) UNLESS OTHERWISE INDICATED, (T) UNLESS OTHERWISE INDICATED, (U) UNLESS OTHERWISE INDICATED, (V) UNLESS OTHERWISE INDICATED, (W) UNLESS OTHERWISE INDICATED, (X) UNLESS OTHERWISE INDICATED, (Y) UNLESS OTHERWISE INDICATED, (Z) UNLESS OTHERWISE INDICATED

Thomas R. Dowling
 George Registered Land Surveyor, No. 1817



RECORDED
 STATE PROPERTIES COMMISSION
 FEB 1 1995
 REAL PROPERTY RECORDS
 005309-414

SHEET 2 OF 2

BOUNDARY SURVEY	
for "PROPOSED ACQUISITION BY THE STATE OF GEORGIA" "CUSTODY IN THE DEPARTMENT OF CORRECTIONS"	
LAND LOT 209 WARE COUNTY	EIGHTH LAND DISTRICT GEORGIA
DATE APR 27, 1993	SCALE AS SHOWN
SURVEYOR THOMAS R. DOWLING	PLAT 1550A-33-C

Exhibit "B"

